

# CRAFTA FORMS

FINISHES STUDIO



## 57

### TEXTURA -CMPC Colored Modern Paper Ceiling

#### **TEXTURA - CMPC - Colored Modern Paper Ceiling**

adds elegance and texture to modern interiors. Crafted from premium French textured paper, it's lightweight, durable, and eco-friendly—perfect for false ceiling designs in halls, restaurants, and commercial spaces that demand creativity and sophistication.





# Textura - CMPC

## Colored Modern Paper Ceiling

The Textura CMPC Colored Modern Paper Ceiling is a contemporary ceiling solution designed for modern interiors. Made from eco-friendly French textured paper and DuPont fabric, it offers a lightweight yet durable structure that enhances spatial aesthetics. Its soft, sculptural surface diffuses light beautifully, creating a warm and inviting ambiance. Ideal for false ceiling designs for halls, lounges, and retail environments, it provides a balance of functionality and artistic appeal. This versatile ceiling design is easy to install, water-resistant, and recyclable—making it the perfect choice for sustainable architectural applications.

### FINISHES

-   
Dove Mist
-   
Ash veil
-   
Sky Veil
-   
Serene Mist
-   
Lavender Veil
-   
Berry Velvet
-   
Royal Tide
-   
Ocean Whisper
-   
Rust Veil
-   
Golden Moss
-   
Rose Clay
-   
Orchid Bloom
-   
Mystic Iris
-   
Ocean Fern
-   
Periwinkle Mist

### MATERIAL

DuPont Textured  
Paper

### DIMENSION

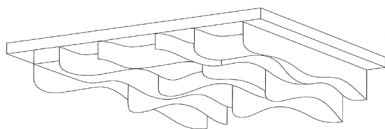
Size	40-30cm
Length	1000m
Standard Size	0.5 × 100 mm

### SURFACE FINISHES

Matte Paper Texture

Soft-touch

### DIMENSIONAL DETAIL



1000 m

Download .dwg ↓

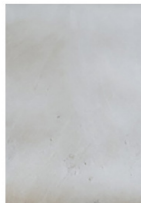


# Finishes

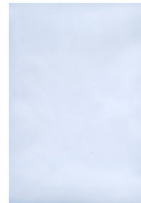
The Textura CMPC Colored Modern Paper Ceiling available in multiple colors inspired by French texture paper, the TEXTURA – CMPC finish creates a refined, layered appearance with natural light reflection. Each panel features a soft matte surface that complements both contemporary and classic interiors, offering a customizable look ideal for artistic ceiling design concepts.

**CMPC-H1**

Dove Mist

**CMPC-H2**

Ash Veil

**CMPC-H3**

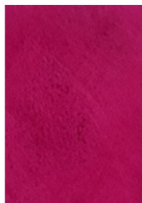
Sky Veil

**CMPC-H4**

Serene Mist

**CMPC-H5**

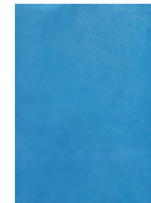
Lavender Veil

**CMPC-H6**

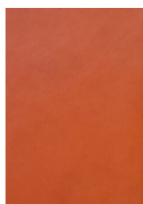
Berry Velvet

**CMPC-H7**

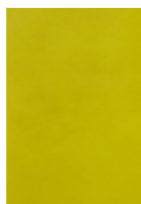
Royal Tide

**CMPC-H8**

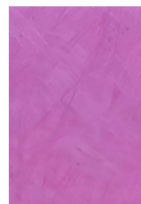
Ocean Whisper

**CMPC-H9**

Rust Veil

**CMPC-H10**

Golden Moss

**CMPC-H11**

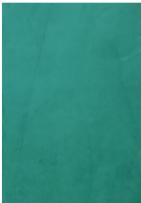
Rose Clay

**CMPC-H12**

Orchid Bloom



**CMPC-H13**  
Mystic Iris



**CMPC-H14**  
Ocean Fern



**CMPC-H15**  
Periwinkle Mist



# Installation Detail

The TEXTURA – CMPC Colored Modern Paper Ceiling panels are installed on a lightweight ceiling grid or directly onto the base frame using adhesive or concealed clips. Ensure proper alignment for a seamless finish. The flexible paper panels can be curved or layered to create 3D ceiling effects. Recommended for indoor use in controlled humidity environments.

## Step 1: Prepare the Ceiling Surface

Ensure the ceiling surface is clean, dry, and free of any debris.

## Step 2: Install the Ceiling Gridding

Install the ceiling gridding framework to provide structural support for the paper ceiling panels.

## Step 3: Fix the Support Frame

Attach the support frame to the ceiling gridding, ensuring it is securely fastened. This frame will hold the ceiling panels.

## Step 4: Add Hanging Clips

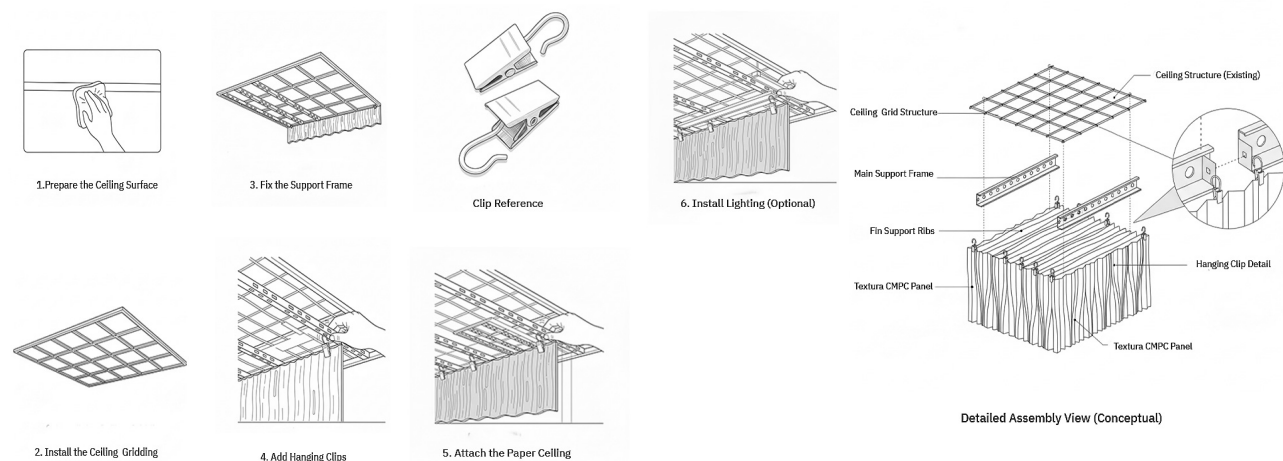
Utilize the provided hanging clips. These clips will attach the paper ceiling to the support frame.

## Step 5: Attach the Paper Ceiling

Carefully attach the Textura CMPC paper ceiling panels to the hanging clips and support frame. Ensure even distribution and alignment.

## Step 6: Install Lighting (Optional)

If desired, integrate LED lighting seamlessly into your ceiling designling to the support frame.





# Connect with Us

**Where ideas meet materials.**  
Let's create spaces that speak  
through surface, texture, and  
detail.

[ask@craftaforms.com](mailto:ask@craftaforms.com)

[craftaforms.com](https://craftaforms.com)

[@insta.craftaforms](https://www.instagram.com/insta.craftaforms)

CRAFTA  
FORMS  
FINISHES STUDIO