

# CRAFTA FORMS

FINISHES STUDIO



## 64 RATTANA -P3CS Corner Weaving Syn- thetic Rattan Panel

**RATTANA – P3CS Corner Weaving Synthetic Rattan Panel** is a handcrafted PE rattan panel designed for interior and exterior use. With UV-resistant fibers, waterproof materials, and a rustproof aluminum frame, it delivers long-lasting beauty. Its corner-weave pattern adds depth to walls, ceilings, and feature installations.





# Rattana -P3CS

## Corner Weaving Synthetic Rattan Panel

The RATTANA P3CS Corner Weaving Synthetic Rattan Panel blends handcrafted artistry with durable construction. Made from UV-resistant PE rattan and a powder-coated aluminum frame, it works in both indoor and outdoor environments. The corner-weave pattern adds texture and shadow, making it ideal for ceilings, walls, partitions, and feature accents. Waterproof materials and rustproof framing ensure long-term reliability in homes, resorts, commercial spaces, and modern architectural projects.

### FINISHES

-   
Sandrift
-   
Mosswood
-   
Claydune
-   
Sandlace
-   
Oakgrain
-   
Sandpearl
-   
Custom

### MATERIAL

High Density Poly-  
ethylene (HDPE)  
Synthrtic Rattan

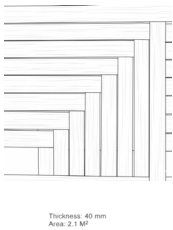
### DIMENSION

Panel Size	3000×700 mm
Thickness	40 mm
Coverage Area	2.1 m²
Fire Rating	Fire-retardant (Option)

### SURFACE FINISHES

Natural-Textured PE Rattan

### DIMENSIONAL DETAIL



Download .dwg ↓

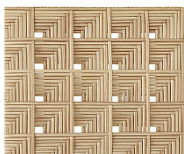


# Finishes

The RATTANA P3CS panel features a handwoven corner-weave finish crafted from UV-resistant PE rattan. Its powder-coated aluminum frame adds a clean, durable edge suited for indoor and outdoor use. Natural rattan textures, earthy tones, and custom color options provide a refined, modern look for any design style.



P3CS-01



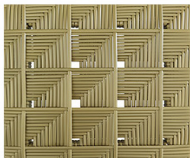
P3CS-02



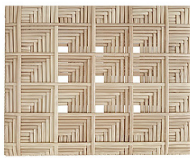
P3CS-03



P3CS-04



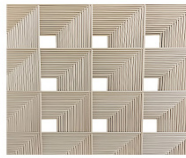
P3CS-05



P3CS-06



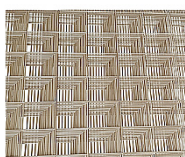
P3CS-07



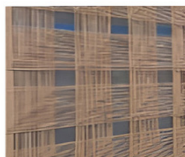
P3CS-08



P3CS-09



P3CS-10



P3CS-11



# Installation Detail

Install the RATTANA P3CS panel by fixing the powder-coated aluminum frame directly to the wall or structural beam using stainless-steel bolts. Ensure the surface is level, then secure all sides for a firm hold. Because the panel is lightweight, handling and positioning are simple, making installation fast and clean.



# Connect with Us

**Where ideas meet materials.**  
Let's create spaces that speak  
through surface, texture, and  
detail.

[ask@craftaforms.com](mailto:ask@craftaforms.com)

[craftaforms.com](http://craftaforms.com)

[@insta.craftaforms](https://www.instagram.com/insta.craftaforms)

CRAFTA  
FORMS  
FINISHES STUDIO