

CRAFTA FORMS

FINISHES STUDIO



114

**3D Square Pyramid
Crystal Glass Block
ORNVITRUM
YZOSPCGB**

3D Square Pyramid Glass Block ORNVITRUM -YZOSPCGB features a faceted pyramid design that enhances light reflection and adds depth to interiors. These 3D crystal glass wall panels provide privacy while allowing natural light, making them ideal for feature walls, partitions, and decorative spaces





3D Square Pyramid Glass Blocks ORNVITRUM-YZOSPCGB

The 3D Square Pyramid Crystal Glass Block – ORNVITRUM – YZOSPCGB is designed to bring elegance and function to modern interiors. Made from ultra-clear glass, these pyramid crystal glass blocks feature a precise 3D surface that reflects and diffuses light beautifully. As a result, spaces appear brighter and more dynamic. These decorative crystal glass panels are durable, moisture-resistant, and easy to maintain. Moreover, they provide privacy without blocking natural light. Suitable for feature walls, partitions, and commercial interiors, these 3D glass wall tiles offer a perfect balance of style, performance, and long-lasting quality.

MATERIAL

Crystalline Glass

DIMENSION

Size	150X150 mm
Thickness	15 mm
Fire Resistance	Noncombustible
Water Absorption	0 %

SURFACE FINISHES

Premium Crystal

FINISHES



Ruby Red



Azure Blue



Emerald
Green

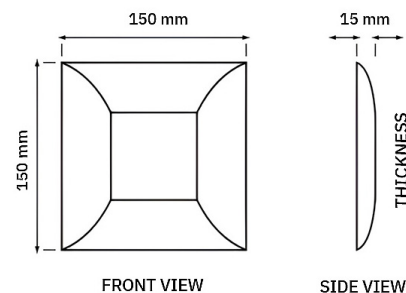


Charcoal
Grey



Custom

DIMENSIONAL DETAIL



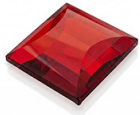
NOTE: Custom size available on request.

[Download .dwg](#) ↓




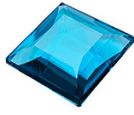
Finishes

Available in clear and ultra-clear finishes, along with a range of color options such as blue, grey, pink, and custom tones. The faceted pyramid surface enhances light reflection, while the smooth glass finish ensures a clean and premium look suitable for modern interior designs.




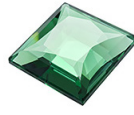
YZ-130

 Ruby Red




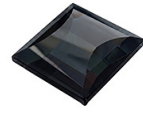
YZ-131

 Azure Blue



YZ-132

 Emerald Green



YZ-133

 Charcoal Grey



Installation Detail

3D Square Pyramid Glass Blocks are installed using standard glass block methods. First, prepare a level base and apply mortar or adhesive evenly. Then, place each block with proper spacing using spacers for alignment. Reinforcement bars can be added for strength in larger panels. After placement, joints are filled and finished neatly. Proper curing ensures durability. These blocks can be used for walls, partitions, and feature panels.



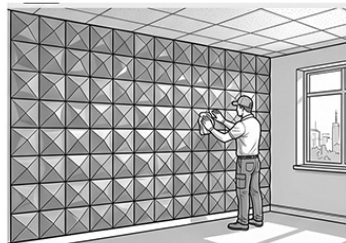
1. Prepare Surface & Layout



2. Apply Silicon Gum Adhesive



3. Press and install the tiles



4. Check Finish & Secure



Connect with Us

Where ideas meet materials.
Let's create spaces that speak
through surface, texture, and
detail.

ask@craftaforms.com

craftaforms.com

[@insta.craftaforms](https://www.instagram.com/insta.craftaforms)