

# CRAFTA FORMS

FINISHES STUDIO



# 123

## Hammered Stainless Steel Sheet STEELONIX- CW1HS

**Hammered Stainless Steel Sheet -STEELONIX- CW1HS** features a rich pebble-textured surface with a premium stainless steel finish. These decorative sheets are rust-proof, durable, and suitable for both interior and exterior use. Ideal for wall cladding, feature panels, furniture, elevators, and modern architectural applications







# Finishes

3D Wave Acoustic Panels-ACUFORMS CFMH3DW10 feature a smooth surface finish with customized color options to match modern interior concepts. The clean wave texture creates elegant depth and visual movement while maintaining a refined architectural appearance. Suitable for luxury commercial and residential interiors.



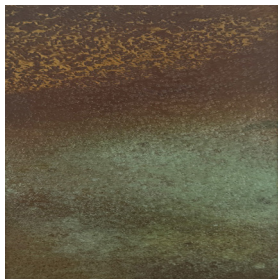
CF-CW1HS-01



CF-CW1HS-02



CF-CW1HS-03



CF-CW1HS-04



CF-CW1HS-05



CF-CW1HS-06



CF-CW1HS-07



CF-CW1HS-08



CF-CW1HS-09



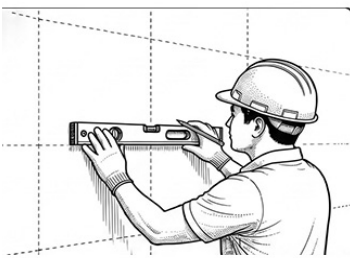






## Frame Fixing Method

Hammered Stainless Steel Sheet – STEELONIX – CW1HS is designed for quick and easy installation. Clean the wall surface and mark the panel layout before installation. Install wooden or metal furring strips securely on the wall to create a support frame. Position the hammered stainless steel sheet carefully over the spacers and align it correctly. Finally, secure the panel using screws or fasteners and check all edges for a neat and professional finish



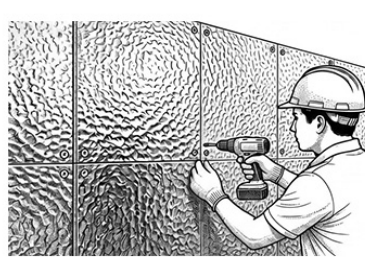
1. Clean Wall and Mark Grid



2. Install Wooden Furring Strips



3. Position Panel Over Spacers



4. Secure all Fasteners and Finish



# Connect with Us

**Where ideas meet materials.**  
Let's create spaces that speak  
through surface, texture, and  
detail.

[ask@craftaforms.com](mailto:ask@craftaforms.com)

[craftaforms.com](http://craftaforms.com)

[@insta.craftaforms](https://www.instagram.com/insta.craftaforms)

CRAFTA  
FORMS  
FINISHES STUDIO